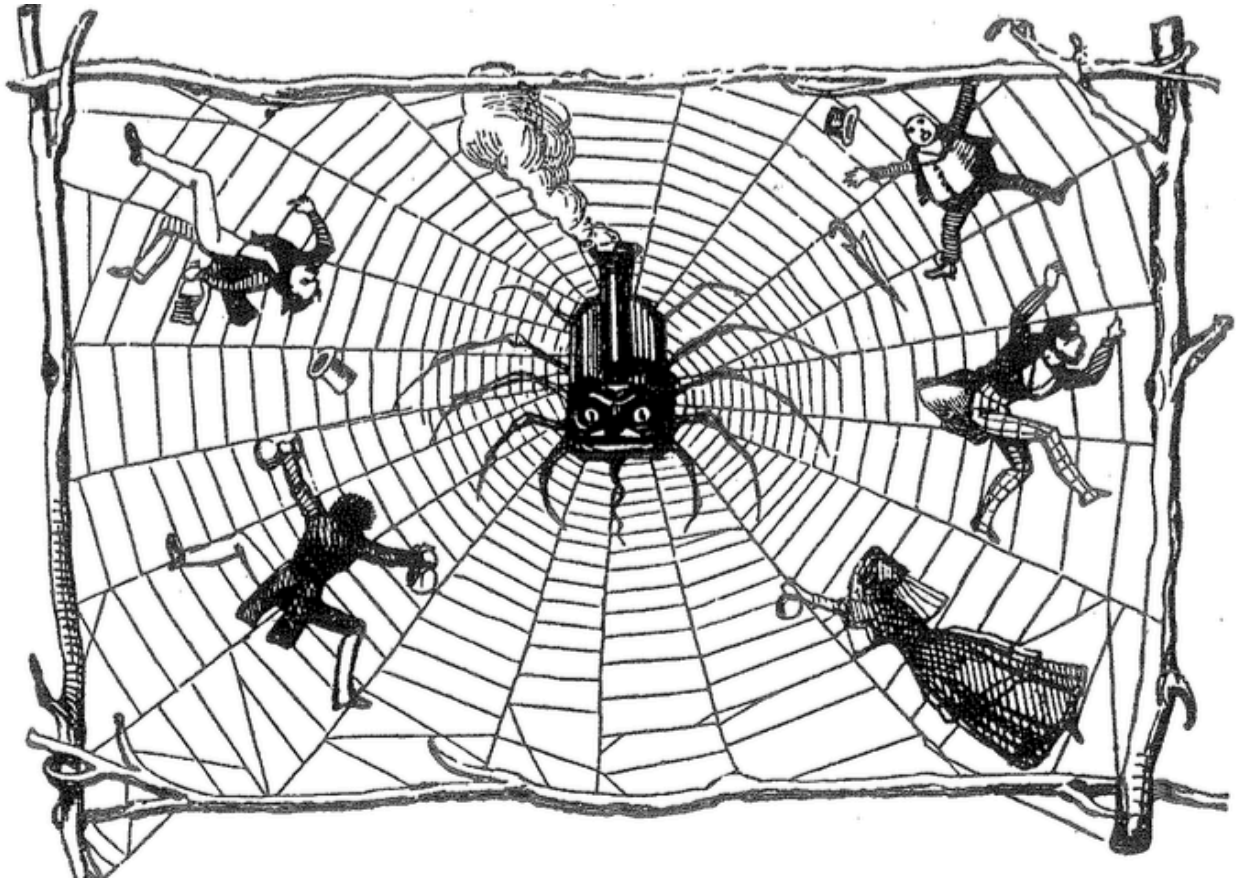


Political Cartoon: The Industrial Revolution



1. This cartoon considers the various effects of the Industrial Revolution on a nation's overall economy. The economy is depicted as a giant spider web with a locomotive in the center as the spider. Why did the artist select a train locomotive rather than some other industrial machine or product as the centerpiece?
2. The Industrial Revolution -- especially its railroads and steamships -- made it possible for people in one region to produce and sell goods in many far-away regions. This resulted in a much greater production of goods, but also led to various problems. How does the web in this cartoon convey the idea that a more interconnected national economy could cause problems for people? What sort of problems might these linkages have caused?
3. What is this cartoon's main idea? What is the artist's point of view?
4. If the cartoon were redrawn to reflect similar problems created by the modern economy, what object would you place at the centerpiece instead of the locomotive? How would you redraw the figures in the web? What else might you include? List all the ways you would revise the cartoon to reflect current economic realities.